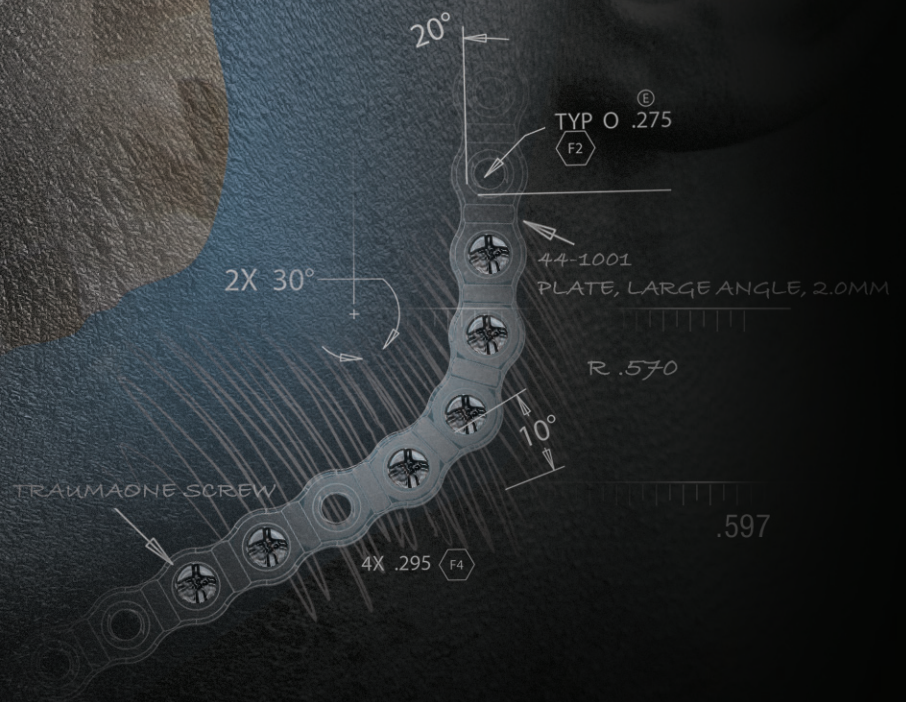


# Encompass™ Reconstruction

With VSP® Technology



**BIOMET**  
MICROFIXATION  
One Surgeon. One Patient.®

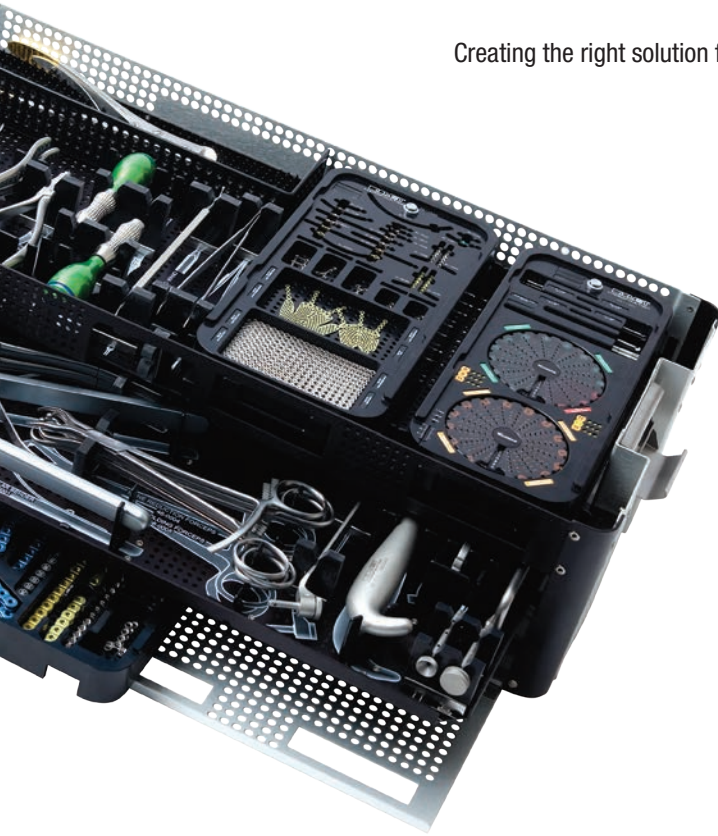


## One Surgeon. One Patient.®

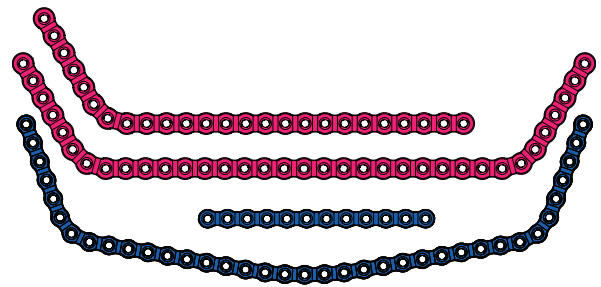
Over one million times a year, Biomet helps one surgeon provide personalized care to one patient. Our approach to innovation creates real solutions that assist each surgeon in delivering durable personalized care to each patient. This commitment starts by providing comprehensive surgical solutions for complex surgical procedures.

## Mandible Reconstruction

Creating the right solution for complex mandible reconstruction begins with a comprehensive fixation offering.



### Comprehensive Plating Selection



### Add-On Condyle



### System Flexibility

A comprehensive plating system for all your reconstruction needs.

### Double-Sided Plate Design

Reversible large angle plates simplify plate selection.

### Screw Versatility

Locking screws in 2.0, 2.3mm diameter.

Non-locking screws in 2.0, 2.3, and 2.7mm diameter.

### Microvascular Instrumentation

The Full Guard instrument is designed to help provide protection of the vascular pedicle when performing fibula osteotomies.

### Innovative Instrumentation



## Encompass

Combined with Biomet's comprehensive plating systems, the Encompass platform offers surgeons a new level of tools and services to streamline the reconstruction process from early stages of planning through execution. It features a suite of products including design and planning tools as well as instrumentation and patient-matched implants resulting in a carefully structured blueprint for complex reconstruction cases. Encompass brings together experts in planning, design, manufacturing logistics and customer service to allow the surgeon to provide the right solution for each patient, leading to the best possible outcome.

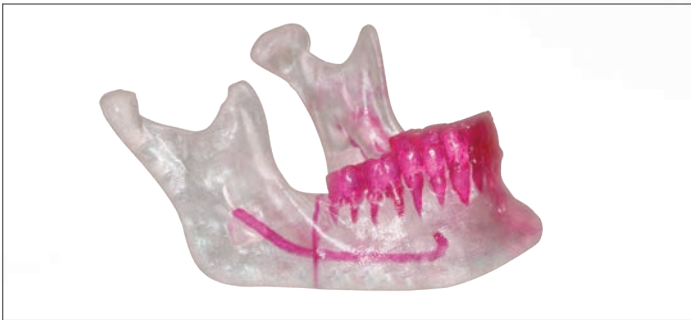
### Encompass Offers:

**Collaborative Design:** The design process is a team effort, pairing the surgeon with both Biomet engineering and Medical Modeling, the industry leader for virtual surgical planning and design; a combination that creates a truly thoughtful approach to patient-specific procedural solutions.

**Streamlined Logistics:** Our team of case managers combined with logistics software and field support are involved every step of the way to ensure that the implant will arrive on time for surgery.

**Surgical Support:** The Biomet team will provide all the support necessary to help drive to a successful outcome before, during and after the procedure.

### Encompass Reconstruction Includes:



#### Anatomic Models

Utilizing a CT scan, a 3D printed model of the patient's anatomy can be used for planning and surgical guidance.

#### VSP® Technology

Utilizing a CT scan, VSP Technology offers efficient and accurate planning and resection.



#### Patient-Matched Pre-Bent Mandible Plate

Biomet engineers utilize the CT and planning data to create an accurate patient-matched implant for reconstructing the mandible.



What fascinates you about the body is also what drives us. That's why we're always pushing the boundaries of engineering to make products that help you keep the human form as glorious as it was intended. To learn more about our breadth of products, call 800.874.7711 or visit us online at [www.biometmicrofixation.com](http://www.biometmicrofixation.com).

We'd love to join you in a conversation about the future.



For more information on Encompass™ or our comprehensive plating portfolio, please contact us at:

**GLOBAL HEADQUARTERS**

1520 Tradeport Drive • Jacksonville, FL 32218-2480  
Tel 904.741.4400 • Toll-Free 800.874.7711 • Fax 904.741.4500 • Order Fax 904.741.3059  
[www.biometmicrofixation.com](http://www.biometmicrofixation.com)

**EUROPE**

Toermalijnring 600 • 3316 LC Dordrecht • The Netherlands  
Tel +31 78 629 29 10 • Fax +31 78 629 29 12

As the manufacturer of this device, Biomet Microfixation does not practice medicine and does not recommend this product for use on a specific patient. The surgeon who performs any implant procedure must determine the appropriate device and surgical procedure for each individual patient. Devices shown in this brochure may not be cleared or licensed for use or sale in your individual country. Please contact your local distributor for information regarding availability of these products. Information contained in this brochure is intended for surgeon or distributor information only and is not intended for patient distribution. All surgeries carry risks. For additional information, including indications, risks and warnings please see appropriate package insert or visit our web site at [www.biometmicrofixation.com](http://www.biometmicrofixation.com) or call 1.800.874.7711

VSP® is a registered trademark of Medical Modeling Inc.  
©2013 Biomet Microfixation • [www.biometmicrofixation.com](http://www.biometmicrofixation.com)  
Form No. BMF00-6825 • Rev 15k1309